

# Product specifications



## LED Buried lights

Side Emitting

Product Code: MF-3WQ1/Q2/Q3

Power:3W

Luminous flux:280Lm

Color: >80Ra

LED Brand:CREE-XTE LED

Input voltage: DC12V-24V

Three light-emitting port optional: Q1 Q2 Q3 single port light 60 °

Color temperature options: warm white (2700-3000K), neutral white (4000-4500K),  
cool white (6000-6500K)

Other light color options: red, green, blue

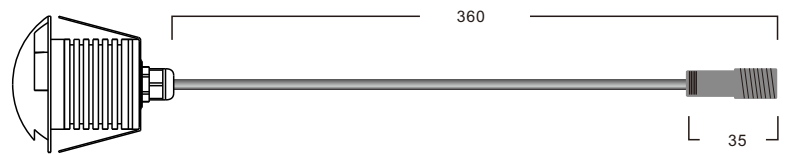
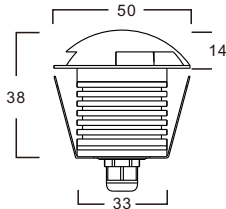
Protection class:IP67

Light body material: 6063 aluminum

Service life: 35000 hours



### Product Specifications:



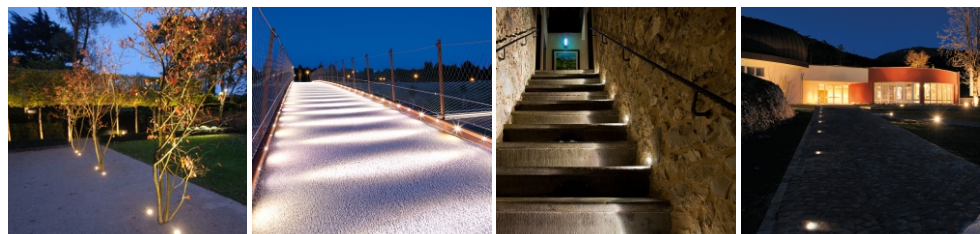
Unit: mm

### Product Features:

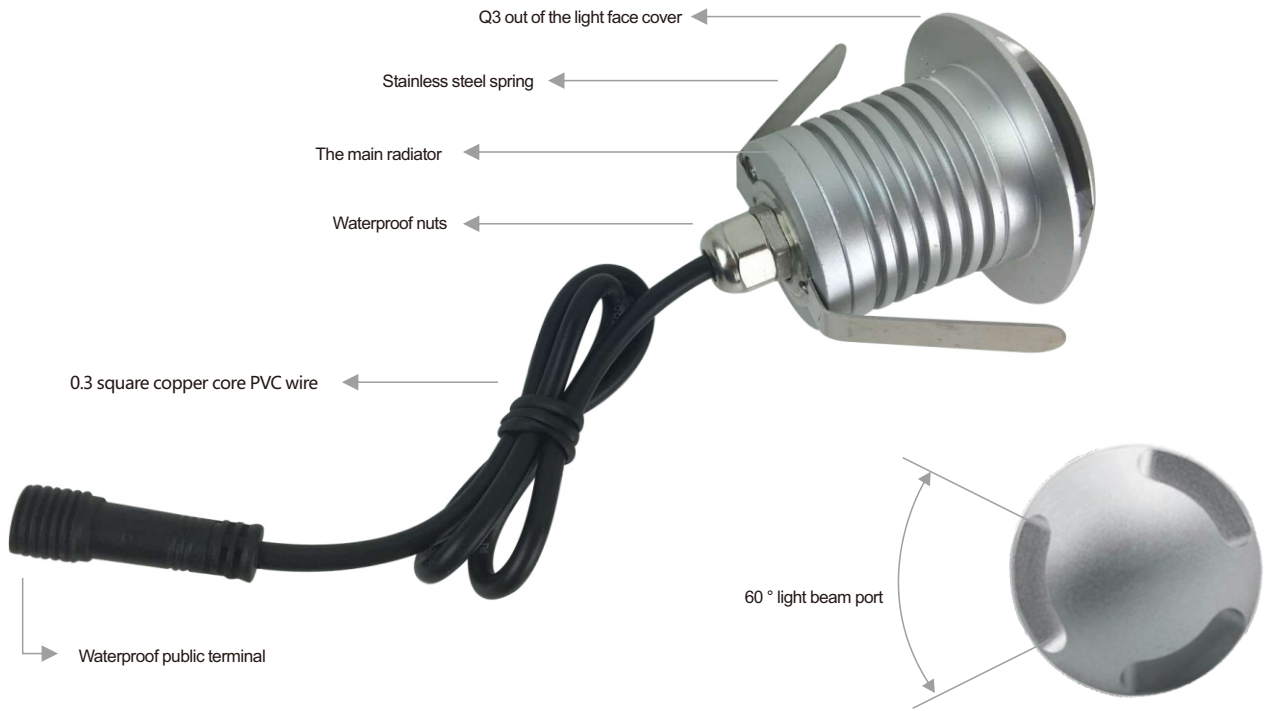
- ◆Independent research and development, private-mode products, uncompromising attention, light body compact, flexible wide range of applications;
- ◆Light color rich optional, warm white, sun white, cold white, red, green, blue and other light;
- ◆Protection class IP67, can be used in the 1 meter underwater;
- ◆The main surface can withstand pressure up to 300KG or more;
- ◆6063 pure aluminum lamp body, with corrosion-resistant, high temperature, real durable;

### Applications:

Roads, squares, sidewalks, gardens, ladder, bridges and other outdoor places .....



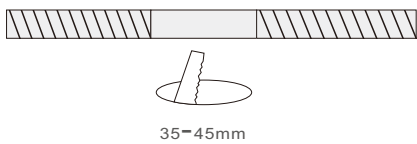
Detailed description:



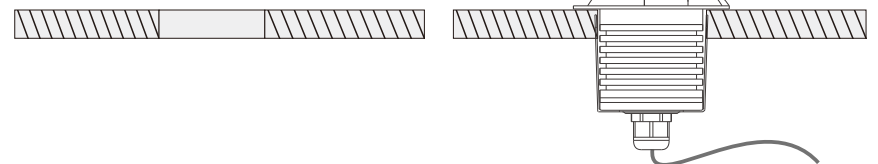
Use the installation method

method 1:

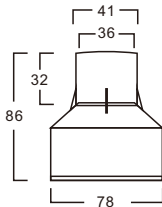
Flooring / Marble / Tile panels



Embedded installation



Method 2:



Wiring, fixed embedded parts



Filled with cement

